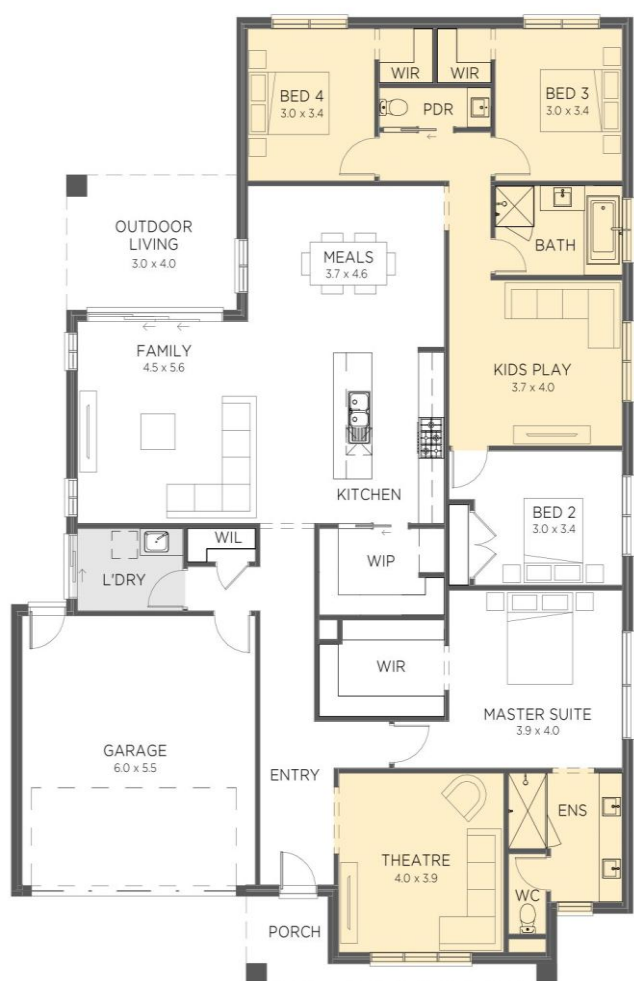


HOUSE & LAND PACKAGE

SJDhomes

Building **more** than homes



\$781,350

ALTURA ESTATE

Lot 113 Candlebark Road, Drouin

House: 28.9 sq | Land: 544m² | Frontage: 16m



DAINTREE 289 – SJD Signature Range

- Façade as shown – others available
- 2590mm ceilings
- Double glazed sliding doors and awning windows
- 20mm stone benchtop to kitchen and bathrooms
- Flush tiled shower bases and shower rails
- Extensive floor tiling/timber laminate flooring options
- Quality Carpet throughout
- 3.5kw solar system
- Gas ducted heating
- Energy efficient heat pump hot water system
- Upgraded insulation
- Developer requirements
- Option to customise the design
- Generous site cost allowance

**Not the package for you...contact me today to
discuss homes to your needs**

Signature
RANGE

Build with confidence with HIA Australian Professional Major Builder 2025

Colette Battersby - Building Consultant
M: 0433 315 513 **E:** colette@sjdhomes.com.au
sjdhomes.com.au

*Some images are for illustration purposes only and may contain items not included in all SJD products. The prices are based on each house as standard and not as displayed. SJD Homes reserves the right to alter prices or the terms without notice. For more information visit: www.sjdhomes.com.au

Minor modifications may be required to suit NCC

* Conditions apply